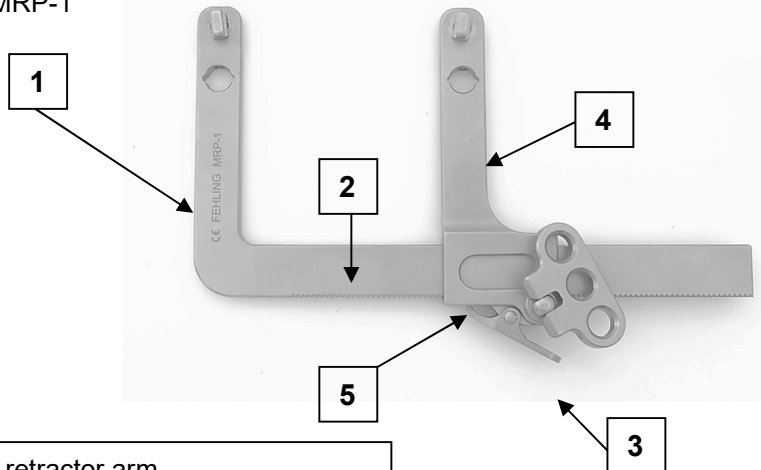


FEHLING BAR RETRACTOR WITH SPROCKET / LOCK

1) Components / Explanations

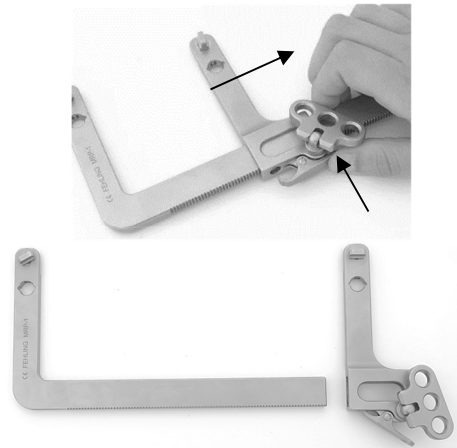
Example: MRP-1



1. Fixed retractor arm
2. Toothed rack
3. Lock
4. Flexible retractor arm
5. Cage

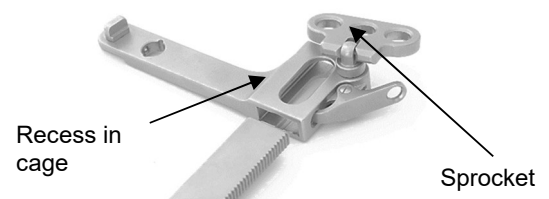
2) Disassembly

1. Advance the flexible retractor arm (4) outwards along the toothed rack (2) until it can be removed. At the same time, release the lock (3) by pressing in the direction of the toothed rack (2).
2. The instrument is now disassembled into its separate parts and can be reprocessed.



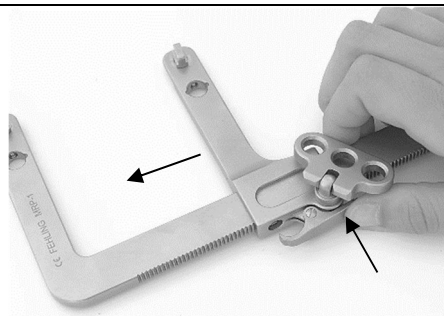
3) Assembly

1. Insert the toothed rack (2) into the recess of the cage (5). At the same time, release the lock (3) by pressing in the direction of the toothed rack (2).



Ensure that both retractor arms point in the same direction and the sprocket of the flexile retractor arm points outwards.

2. Advance the flexible retractor arm (4) along the toothed rack (2) inwards in the direction of the fixed retractor arm (1).
3. Following a functional test, the assembled instrument is now ready for use again.



Symbols

In as far as depicted on the medical device or medical device label or instructions for use or instructions for assembly the symbols represent the following meaning:

 Manufacturer	 Instructions for Use are to be observed	 Warning
 Article number	 Batch code	 Serial number
 CE labeling	 CE labeling	 Oil can for points to be lubricated

To contact the manufacturer:

	FEHLING INSTRUMENTS GmbH & Co. KG Hanauer Landstr. 7A 63791 Karlstein, Germany Tel.: +49 (0) 6188-957440 Fax: +49 (0) 6188-957445 E-mail: info@fehling-instruments.de www.fehling-instruments.de	
--	---	--